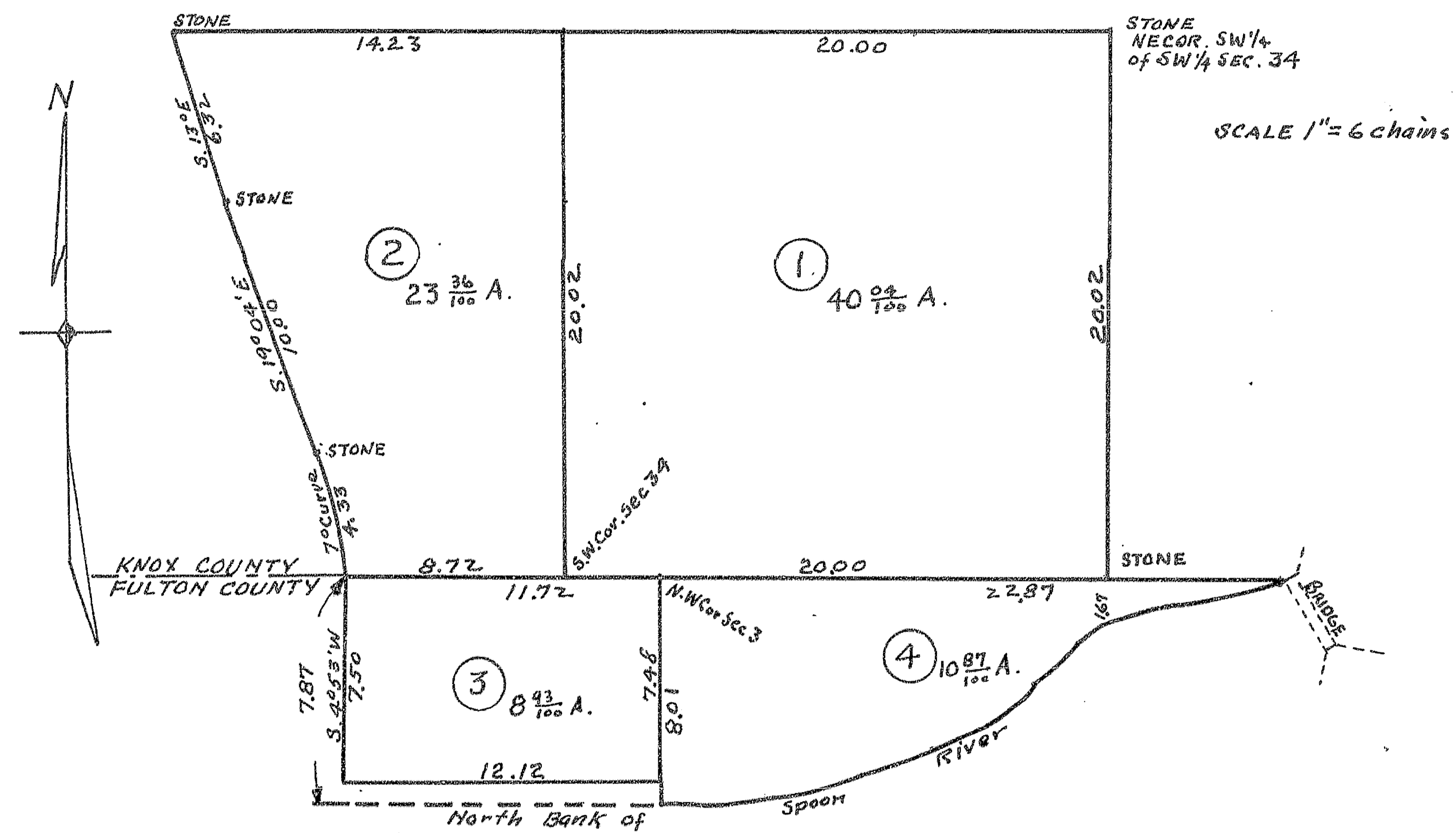


# REVENUE PLAT 1942

S.W. 1/4 OF S.W. 1/4 OF SECTION 34 AND PART OF S.E. 1/4 OF S.E. 1/4 OF SEC. 33 IN TWP. 9 N. R. 2 E. OF 4<sup>TH</sup> P.M. KNOX CO. ILL.

ALSO

PART OF N.W. 1/4 OF SECTION 3 AND PART OF NE. 1/4 OF SECTION 4 IN TWP. 8 N. R. 2 E. FULTON CO. AND NORTH OF SPOON RIVER

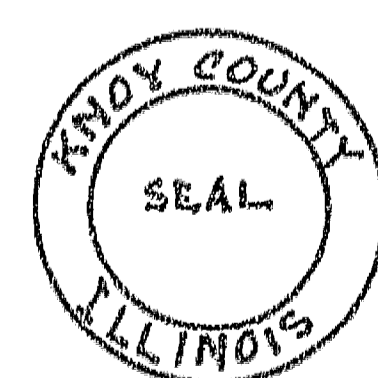
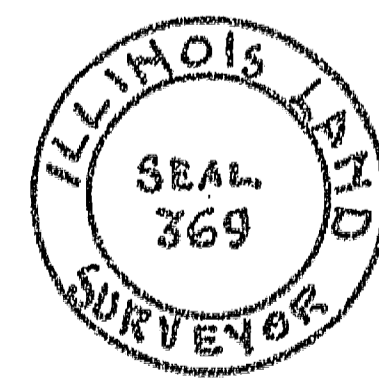


STATE OF ILLINOIS }  
KNOX COUNTY } ss.

I, Geo. A. Larson, County Clerk, within and for said county and state aforesaid, do hereby certify that I am the keeper of the files, records and official seal of said Knox County; I further certify that I find no delinquent general taxes, unpaid current general taxes or unpaid special assessments against any of the real estate included in the attached plat.

Witness my hand and official seal this 21 day of December 1942.

Geo. A. Larson County Clerk.



STATE OF ILLINOIS, }  
Knox County, } ss.

I, S. S. Scott County Surveyor of said Knox County, do hereby certify that the foregoing and annexed is a true Plat and description of Lands ~~as taken from the records of Knox County, and by measurements and survey, as provided for in Sections 516 and 517, Chapter 120, Revised Statutes of Illinois, 1909.~~ 4/

Dated this 8<sup>th</sup> day of December 1942.

S. S. Scott County Surveyor.

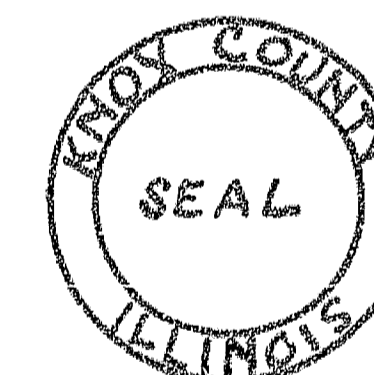
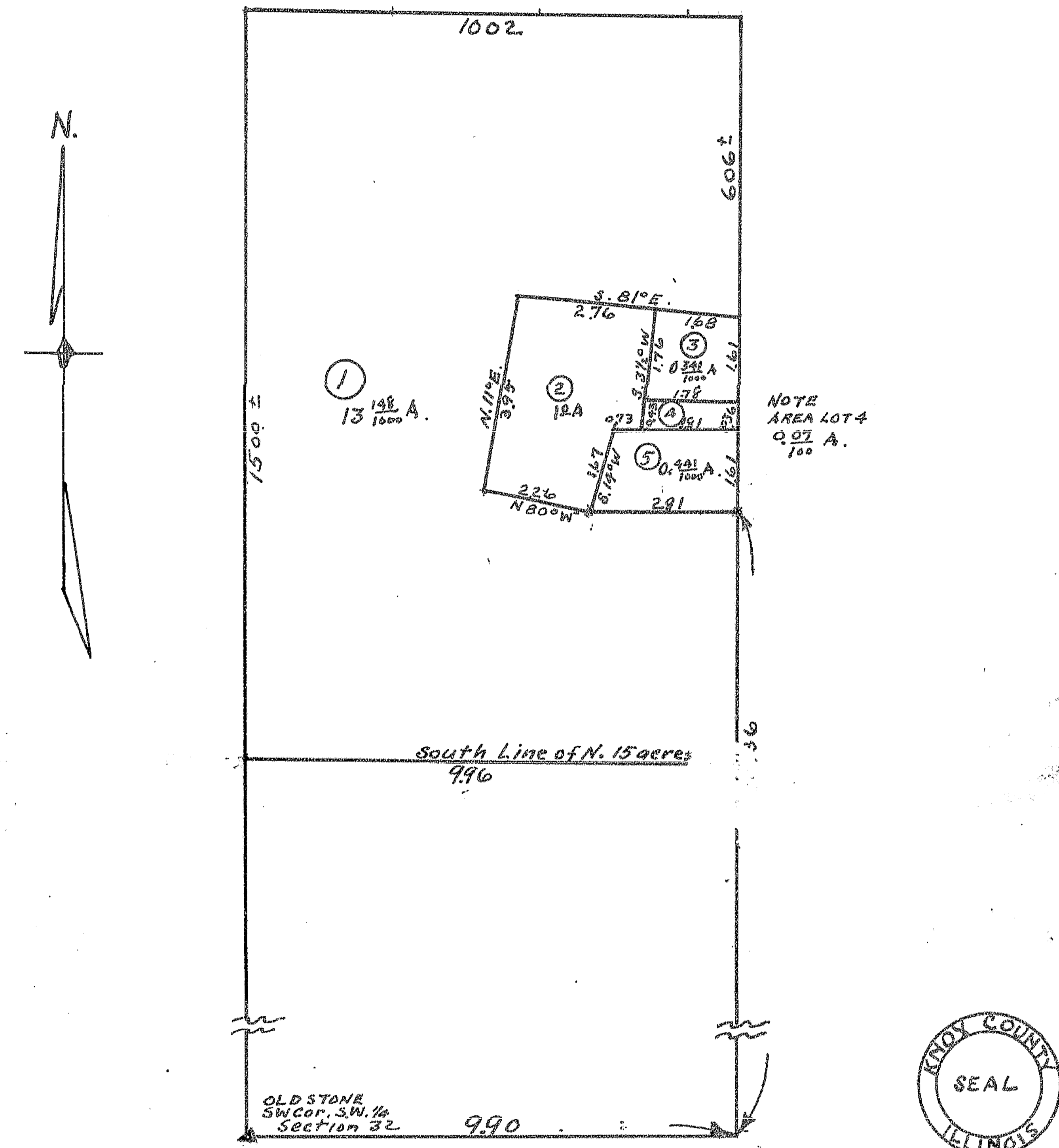
Approved by me, this \_\_\_\_\_ day of \_\_\_\_\_

\_\_\_\_\_, County Clerk.

# REVENUE PLAT 1942

A SUBDIVISION OF THE NORTH 15 ACRES OF THE WEST HALF OF THE WEST HALF OF THE SOUTHWEST QUARTER OF SECTION THIRTY-TWO IN TOWNSHIP 12 N. R. 1 E. OF 4<sup>TH</sup> P.M. KNOX COUNTY ILLINOIS

SCALE 1" = 3 chains



STATE OF ILLINOIS }  
KNOX COUNTY } ss.

I, Geo. A. Larson, County Clerk, within and for said County and state aforesaid, do hereby certify that I am the keeper of the files, records and official seal of said Knox County; I further certify that I find no delinquent general taxes, unpaid current general taxes or unpaid special assessments against any of the real estate included in the annexed plat.

Witness my hand and official seal this 31 day of December 1942.

Geo. A. Larson COUNTY CLERK

STATE OF ILLINOIS, }  
Knox County, } ss.

I, S. S. Scott County Surveyor of said Knox County, do hereby certify that the foregoing and annexed is a true Plat and description of Lands ~~as taken from the records of Knox County, and by measurements and survey, as provided for in Sections 516 and 517, Chapter 120, Revised Statutes of Illinois, 1909.~~ 4/

Dated this 28<sup>th</sup> day of December 1942.

S. S. Scott County Surveyor.

Approved by me, this \_\_\_\_\_ day of \_\_\_\_\_

\_\_\_\_\_, County Clerk.